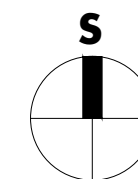


1201/I1  
3+kk  
89,8m<sup>2</sup>  
33,5m<sup>2</sup>

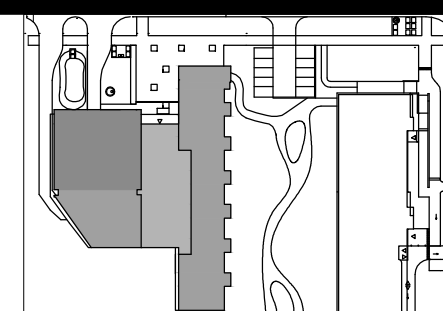
1203/I1  
2(1)+kk  
54,7m<sup>2</sup>  
29,7m<sup>2</sup>

1202/I1  
4+kk  
113,5m<sup>2</sup>  
54,1m<sup>2</sup>



0 5m 1:200

1+kk
  2(1)+kk
  2+kk
  3+kk
  4+kk



situace - schéma



podlaží

**12.NP**

2016-10-03

INDEX A