

501/11
2(1)+kk
50,0m²
21,3m²

502/11
1+kk
37,6m²
12,0m²

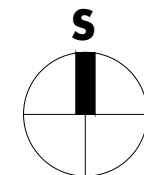
503/11
2(1)+kk
53,2m²
13,0m²

504/11
4+kk
119,9m²
14,5m²

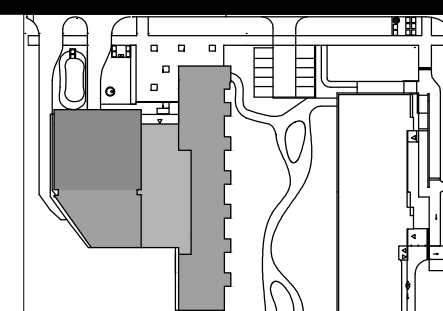
507/11
2(1)+kk
54,3m²
29,7m²

506/11
2(1)+kk
60,0m²
13,6m²

505/11
3+kk
88,2m²
9,3m² 2,6m²



0 5m 1:200



situace - schéma

podlaží

5.NP

2016-10-03

INDEX A