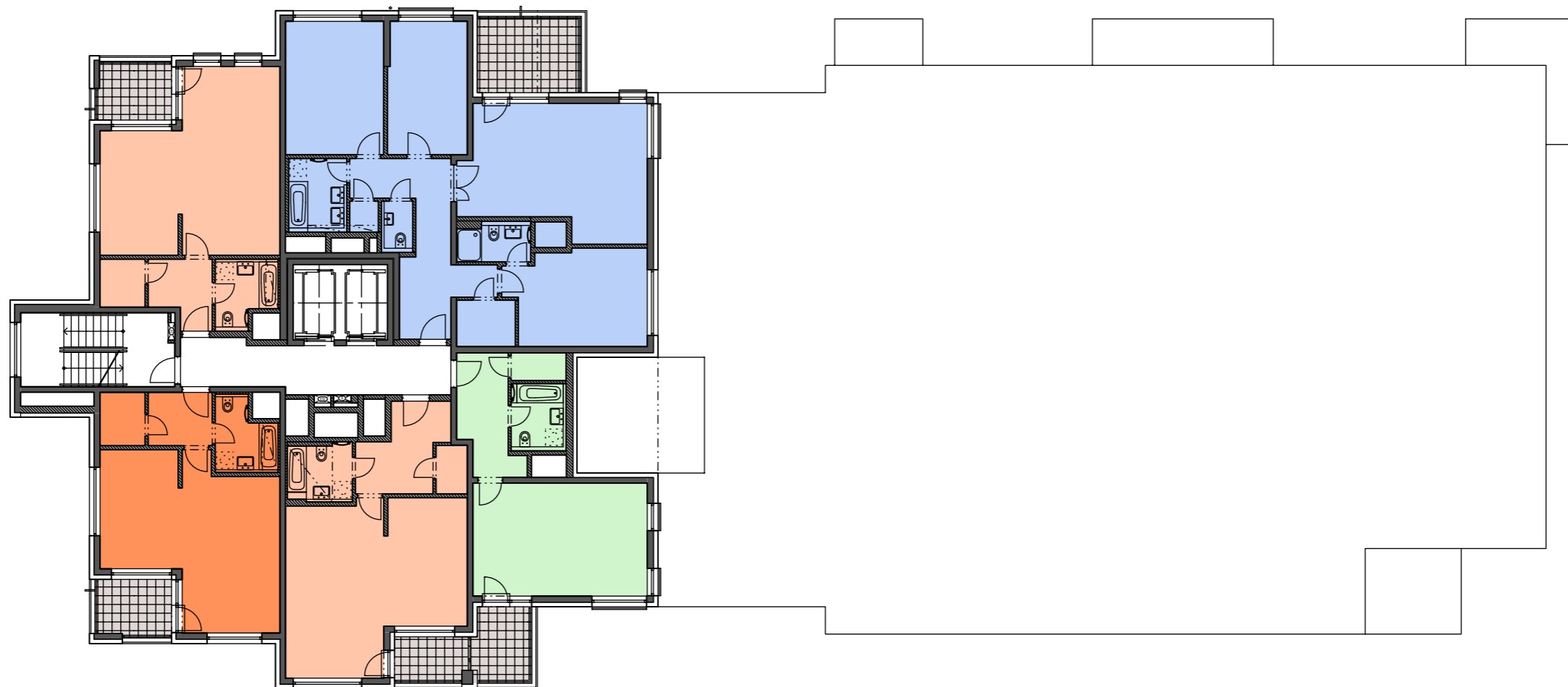


1501/H  
 2(1)+KK  
 52.9 m<sup>2</sup>

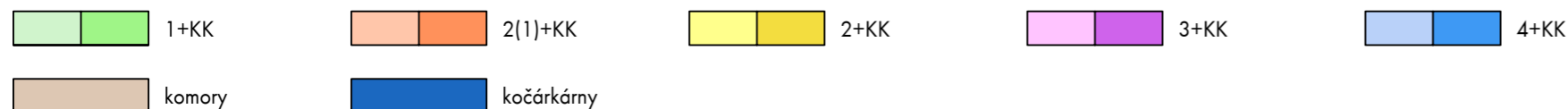
1502/H  
 4+KK  
 119.7 m<sup>2</sup>



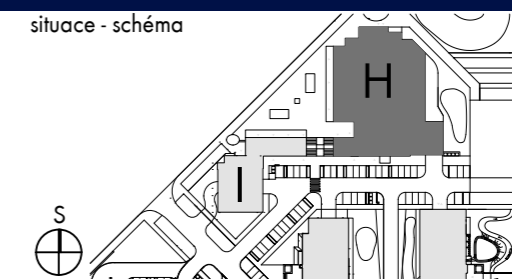
1505/H  
 2(1)+KK  
 49.3 m<sup>2</sup>

1504/H  
 2(1)+KK  
 54.4 m<sup>2</sup>

1503/H  
 1+KK  
 42.7 m<sup>2</sup>



situace - schéma



PODLAŽÍ

## 15.NP