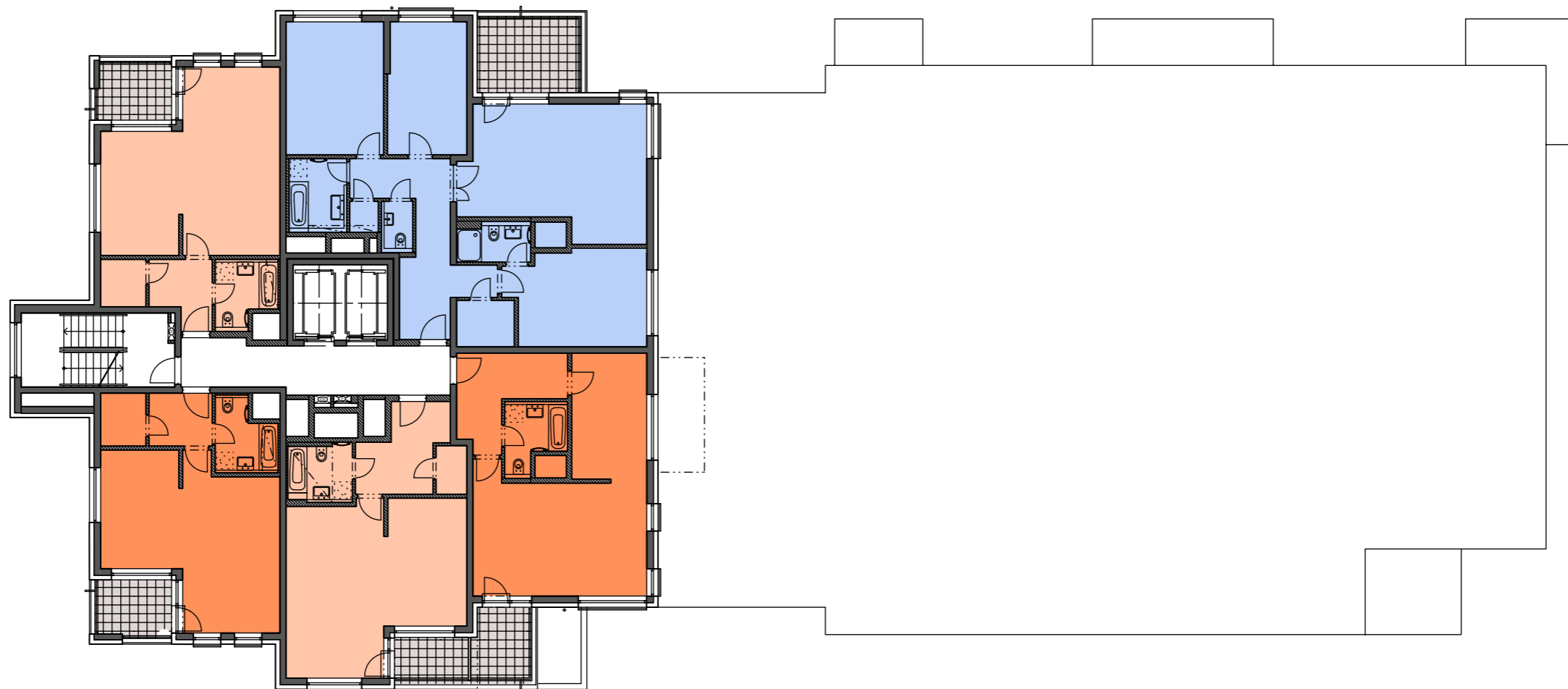


1001/H
 2(1)+KK
 52.5 m²

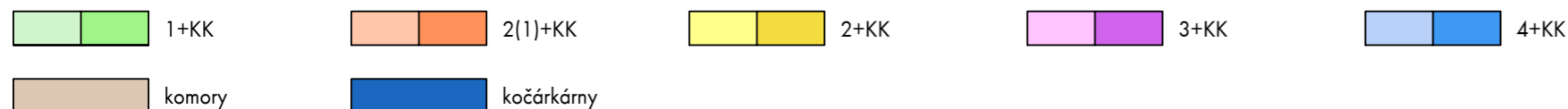
1002/H
 1002
 119.1 m²



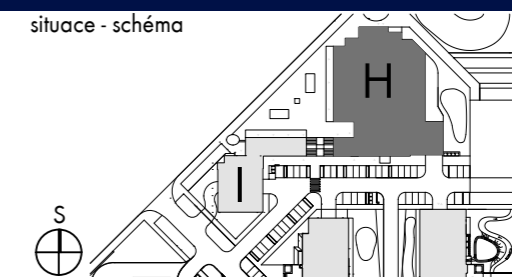
1005/H
 2(1)+KK
 48.9 m²

1004/H
 2(1)+KK
 53.9 m²

1003/H
 2(1)+KK
 58.2 m²



situace - schéma



PODLAŽÍ

10.NP

2019-06-12 INDEX A